



Issue 3 5 March 2020

# St Joseph's School

10 Ina Avenue, Ottoway S A 5013  
Telephone: (08) 8447 4969  
Facsimile: (08) 8241 0380  
Email: info@stjotto.catholic.edu.au  
Website: www.stjotto.catholic.edu.au

**In All Things Love**

## Uniform Shop

Open on Monday and Fridays  
8.30 am to 9.30 am

## Playgroup

Friday - 10.00 am to 11.30 am

## Out of School Hours Care

### Daily

6.30 am to 8.30 am  
and 3.00 pm to 6.00 pm

**Tuesday** 2.45 pm to 6.00 pm

Bookings essential

Mobile: 0437 863 067

## St. Maximilian Kolbe Parish

Priest - Fr Marek Ptak CR

Phone: (08) 8447 3223

Email: stmax@ottowayparish.com

## Mass Times

Saturday 6.30 pm

Sunday 8.30 am English &  
10.30 am Polish

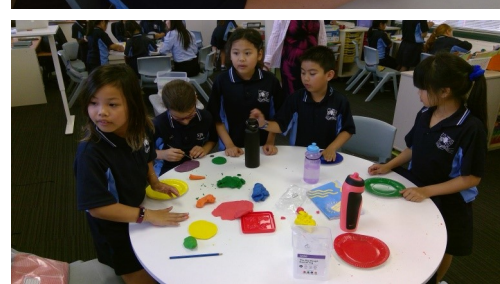
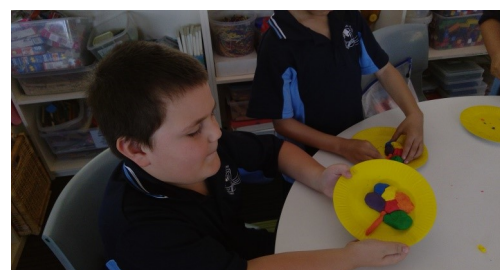
Weekday 6.30 pm English & Polish  
Except Tuesday

(check with Parish)

# Newsletter



**Here are our resident neurologists from the 2/3 and 3/4 class. This week we discovered that our brains are made of different parts and that each part has a number of very special roles in keeping us alive and learning. In creating our models we used our frontal lobe, temporal lobe, spinal cord, cerebellum, occipital lobe and parietal lobe. Aren't we brainy!**



**We acknowledge that our school is on Kurna country. We recognise and respect the Kurna people as the continuing custodians of the Adelaide Plains and pay our respect to Elders past and present.**

### **Making Space for Learning 2 Year Inquiry Project**

Across 2020-21 our school will participate in the Making Space for Learning Inquiry Project. The aim of the inquiry is to be able to identify the behavioural and learning difficulties associated with developmental trauma and formulate an informed and effective educational response. To this end, the inquiry begins with a detailed understanding of early year's brain development. It then examines the nature and effects of developmental trauma. Lastly, it provides strategies to respond to the specific behavioural and learning difficulties associated with developmental trauma. The whole school staff were involved in the initial 2 day workshop held on January 22 and 23 this year. Feedback from staff has been positive and they are looking forward to the inquiry progressing further.

### **Teaching and Learning**

I currently have the pleasure of working with our Year 2, 3 and 4 children every Monday to Thursday as part of their Numeracy block. Enhancing children's learning outcomes through providing contemporary child centred and engaging learning opportunities is our focus as teachers. Being in relationship with our children and their families, working in partnership to support all learners across the school is an important part of what we do. Numeracy blocks; uninterrupted Mathematics learning time take place Monday to Thursday across the school. All of our children are working hard developing their Numeracy knowledge, understand and skill.

### **Pupil Free Day – Friday March 6.**

Tomorrow our staff will be involved in professional learning as part of the Aboriginal Cultural Competence Program facilitated by Catholic Education South Australia. The program aims to increase staff expertise in teaching Aboriginal and Torres Strait Islander cultures as part of our Indigenous Education program. OSHC will be available for families who require the service on this day. Bookings are essential so please see Mieke if you need to make a booking.

### **St. Joseph's Feast Day – Thursday March 19.**

As a whole school we will join the parish community in celebrating St. Joseph's Day mass in St. Maximilian Kolbe Church. Parents are very welcome to join us during this mass. Further details about the day will be forwarded to you closer to the time.

### **Sports Day – Friday March 27.**

Sports Day this year will be held at the Port Adelaide Athletics Club. It promises to be a great day full of fun for all our children. An information notice was sent home to all families in Week 4.

### **Catholic Identity**

On Wednesday February 26 we celebrated Ash Wednesday as a whole school community. Ash Wednesday marks the beginning of the Church season of Lent. To begin Lent we are marked with a cross on our forehead using ash from the burning of palm branches used on Palm Sunday last year. This year's ash also included that from the recent Adelaide Hills bushfire. The cross reminds us of Jesus' love for us. The season of Lent lasts for forty days and is a reflective time of fasting, prayer, and penance in the lead up to Easter. The official liturgical colour for the season of Lent is violet.

### **Curriculum News**

I have included two mathematical challenges which you might like to have a go at with your child/children.

This week's Mathematical challenges:

#### **Reception to Year 3**

Mandy from Venus has a friend from Jupiter. Her friend has 3 eyes, 7 arms, 5 legs, 21 fingers and lots of spots. What does he or she look like? What is its name? Try to create number sentences about Mandy's friend.

#### **Years 4-6**

Clara has a puzzle to solve. Help her list all numbers that fit these clues:

I have two digits. I am less than 96. I am more than 18. The sum of my digits is not even. My ones digit is one more than my tens digit. Please show working out. Example: 34. (Working Out:  $3+4=7$ .  $34= 3$  Tens and 4 Ones).

Happy inquiry.

Reading is another core learning area here at St Joseph's School. Our staff use an agreed set of practices around children's development of reading skills, knowledge and understanding. These practices shape our reading programs across the school.

Children develop their reading skills, knowledge and understanding by reading regularly. At St Joseph's School regular reading at home forms a major part of homework set each evening. Why not create regular timeslots throughout the week whereby all electronic devices in the home are turned off and members of the family spend 15 minutes reading together.

Happy reading.

### **Term 3 Preschool and Reception Intake**

St. Joseph's School will once again have a Pre-school and Reception intake at the start of Term 3 this year. Our Term 3 new Pre-school children will replace those moving into Reception as part of our Term 3 Reception intake. Our Term 3 new Receptions will join our current R/1 classes. The criteria for starting Pre-school or Reception on the first day of school in Term 3 is that a child will have turned 4 (Pre-school) or 5 (Reception) between 1 May and 31 October in that year. During Term 2 we will hold a number of transition visit mornings for our new Pre-school and Reception children with the aim of supporting their new start.

### **School Chaplain**

In 2020 we have once again been successful in achieving a \$12000 grant as part of the National School Chaplaincy Program. The grant will enable the school to employ a School Chaplain one day a week. We have joined with Whitefriars Primary School to advertise the position as a 2 day per week role across the 2 schools.

School Chaplains are responsible for supporting the spiritual, social, and emotional wellbeing of students regardless of faith or beliefs by providing pastoral care services. School Chaplains must be able to provide support for a range of day to day matters affecting the school community and communicate effectively with the community. They can become involved in a wide variety of issues including health, social and values education, and spiritual and emotional support.

### **Parent Coffee Morning every Tuesday**

One of our goals in our School Strategic Plan 2018-2020 is to encourage greater parental engagement in school life. One way of achieving our goal is to continue hosting regular parent coffee mornings. I appreciate that many of our families work during school hours and so we are also exploring ways that our working families can be more involved and engaged in our school.

I would love as many parents/carers as possible to join us for a cuppa and chat in the courtyard each Tuesday morning between 8:30am and 9:15am. Initially Simon McCullough will organise this with our soon to be appointed school chaplain taking over once that person joins our school community.



## Principal News Continued

### School Master Plan

Late last year we received notice that we were unsuccessful in obtaining a Capital Grant in 2020 to fund Stage 1 of our building Master Plan. As a result we have decided to bring forward and self-fund the Nature Play and Sustainability Garden component of our school Master Plan which will be located on the grassed area adjacent to the rain water tank. The four square and basketball court hard surfaces will be upgraded as part of this project. The school has received a \$20000 grant through the *Local Schools Community Fund* (an Australian Government initiative to support schools with small scale projects) to use towards the cost of developing this part of our school Master Plan.

### How does Confidence develop?

#### Babies are born curious.

They want to touch, see, hear and taste everything within their reach. Toddlers and pre-schoolers demonstrate their need to understand their world by asking many 'why' questions. From their repeated experiences of seeing their actions affect their world and the people in it, young children begin to see themselves as capable and having control. This helps them to feel good about themselves and builds their self-confidence.

When they begin school, children typically start out with high expectations but when they see how they do things compared to others, their view of their own abilities often changes. They learn that they're good at some things and not so good at others. They also see how other children and educators respond to what they do. These things influence children's confidence in their abilities. They also influence how willing they are to have a go in situations where they feel unsure.

The way adults respond to children as they explore their place in the world is their template for solving many challenging and difficult problems later on. For young children, it helps strengthen their sense of self when significant adults nurture their natural curiosity and demonstrate patience and interest. In primary school years, children who are suddenly less sure of themselves may need extra support and encouragement to build a functional sense of confidence they can take with them into adolescence. Building children's confidence allows them to have a go at and try new things. It allows them to develop social and emotional learning skills and tackle new tasks – even when they might be daunting or completely new. There are many ways that you can support children's developing confidence and sense of self.

#### Give regular encouragement and praise.

Praise is most effective when adults are mindful of how and when they use it. When praising children, focus on their efforts and achievements. Praise that's specific and acknowledges the processes of completing an activity or solving a problem helps develop children's learning and motivation. For example, you might say "You put away your toys so nicely", "I noticed you were really trying hard at building that block tower" or "You've used so many bright colours in your painting." Children can then use this learning when they have similar experiences in the future.

To learn more about how you can help [build resilience in your children](#) visit **Be You** (formerly Beyond Blue)

<https://beyou.edu.au/fact-sheets/development/brain-development>

### Skool Bag App

To keep up to date with what is happening within our school along with upcoming school events why not download the **Skool Bag App** from the App Store on your mobile phone. Once downloaded simply search St Joseph's School, Ottoway and add to your Skool Bag page. Many of our families currently use the **Skool Bag App** to keep up to date with what is happening across our school.

In addition our school website **News and Events** link is regularly updated to assist our families in keeping up with what is happening across our school.

### Safety Message

Students and families are reminded to be wary of approaches from strangers, especially when they are unaccompanied or travelling to and from school. If they are approached, students should not respond and should not accept offers of rides or gifts. Students should seek the assistance of other nearby adults if they feel unsafe and should report the event to a trusted adult (parent or school staff member) as soon as possible. SAPOL advises that taking out a mobile phone and calling police can deter the offender and they recommend the student making a formal report to their closest police station.

### OSHC Opening Hours

Just a reminder that OSHC is now open from 6:30am each morning to accommodate families who start work early. It is hoped that continuing to open the service at 6:30am each morning will support our working families meet both their working commitments while at the same time ensuring quality care for their children.

May God's love continue to be with us during this season of Lent.

Working in partnership with you.

Shaun O'Leary.

## Overseas Born Students



If your child was born in a country other than Australia, we are required to hold copies of current VISAs. If your resident status has changed to 'citizen', it is imperative that you provide us with copies of your Australian Passport and Citizen certificate.

Every August we are required to complete an Australian Government Census which includes reporting how many students attend our school who hold VISA's to determine eligibility to attend Government funded schools.

If your VISA has expired, conditions have changed or you status is now that of an Australian citizen, please bring your original documents into the Office as a matter of priority so we can update our records. If our records are not current or we are unable to determine your eligibility to access Government funded schooling, you may be charged the overseas full fee paying student rate per year.

# Reminder

**Friday March 6 Pupil free day**

**Monday March 9 Public Holiday**

## APRIM News

### St Joseph's Feast Day and Harmony Day celebration

On Thursday 19 March we will celebrate St Joseph's Feast Day Mass and a Harmony Day Celebration. Children are invited to wear casual clothes and bring a gold coin that will be donated to Project Compassion. You are invited to join us for Mass at 10am in the Church.

**Sports Day** this year will be held on Friday 27/3 – Sports Day @ Port Adelaide Athletics Track. Students will be required to be dropped off and picked up from the venue. A letter has been sent home with all the details very soon and hope you can stay and enjoy the day. We are looking for volunteers to help cook the barbecue and to serve lunch. Please let me know if you are interested in helping.

### Some other important dates –

Friday 6/3 – Pupil Free Day – The Aboriginal Cultural Competence Program

Monday 9/3 – Adelaide Cup Holiday

Tuesday 17/3 – St Patrick's Day Mass

Thursday 19/3 – St Joseph's Mass and Harmony Day Celebration

Monday 23/3 - School Board

23/3 – 25/3 Parent / Teacher Interviews – Tuesday is the late night

Wednesday 25/3 – Assumption Mass

Friday 27/3 – Sports Day @ Port Adelaide Athletics Track

6/4 – 10/4 Holy Week liturgies 8:45am each morning



### Parents and Friends and Volunteers

Thank you to those who have volunteered some time to help with Parents and Friends. If you want to chat about what is involved, please catch up with me before or after school one day or send back the flyer below and I will be in touch with you.

**Tea and Coffee** is set up on the barrels each Tuesday morning and we would love you to stop with us for a chat whenever you have time.

### Orphanage Appeal

This term Fr Marek has asked that we support an orphanage the parish is helping in South America. We are asked to donate good quality clothes or toys, and these will be sent to orphanage later this year. Fr Marek tells us that these kinds of goods are vital and that our support would be wonderful. A basket is in each classroom for you to leave any donations and we thank you on behalf of the parish.

## Reply Slip

Please return to Simon McCullough

I, \_\_\_\_\_ would like to support the 2020 Parents and Friends events or volunteer in another way.

My child / children are in: \_\_\_\_\_ (class)

I am best contacted on: \_\_\_\_\_ (phone / email)

## School Calendar

Term 1 2020

March		April	
6	Pupil Free Day – School Closed The Aboriginal Cultural Competence Program	6 to 10	Holy Week liturgies 8.45 am each morning in the Tenison Woods Centre
9	Adelaide Cup Holiday	9	Holy Thursday - 12.30 pm finish Last Day of Term 1
17	Whole School Mass - St Patrick's Day 10.00 am	10	<b>Good Friday - School Closed</b>
19	Whole School Mass - St Joseph's Day 10.00 am and Harmony Day	Term 2 2020	
23	School Board - 5.30 pm	27	First Day of Term 2 - 8.45 am
23 to 25	Parent Teacher Interviews Tuesday is the late night		
25	Whole School Mass - The Feast of the Annunciation 10.00 am		
27	Sports Day - Port Adelaide Athletics Track		

## Notice Board

# MOUNT CARMEL COLLEGE

## OPEN DAY

Free gifts  
and a Sausage  
Sizzle!

**4pm-7pm**

**Thursday 12 March**

*Join our friendly and supportive community on Open Day  
and experience why Mount Carmel College is  
where you belong!*

33 Newcastle Street, Rosewater SA 5013      T (08) 8447 0500 | E mcc@mcc.catholic.edu.au | W www.mcc.catholic.edu.au

## SA Dental Service

Children with poor oral health are more likely to experience pain, to miss days from school and to perform poorly in the classroom. Untreated tooth decay can lead to problems with speaking, eating and learning.

SA Dental Service sees over 80,000 children for dental care each year, but data shows that 57.5% of eligible children in SA are not using the Medicare Child Dental Benefits Schedule.

There are no out of pocket costs for children covered by the Medicare Child Dental Benefits Schedule.

Help us improve the oral health of children in your school by promoting SA Dental Service. Please include the attached insert in your next newsletter and online.

All children are welcome at SA Dental clinics.

Kind regards  
Mark Chilvers

# ST PATRICK'S TECHNICAL COLLEGE

## OPEN DAY

**SUN 29 MARCH**

**12-3PM | REGISTER NOW**

**Registrations Essential**  
[www.stpatstech.sa.edu.au](http://www.stpatstech.sa.edu.au)

*Principal's Presentation at 12:15pm, 1pm or 1:45pm  
With tours of the College conducted throughout the day  
Enjoy refreshments prepared by our Food & Hospitality students*

2-6 Hooke Road  
Edinburgh North SA

**YEAR 11 & 12 EDUCATION, TRAINING  
& APPRENTICESHIP PATHWAYS**

# PLANT PROPAGATION WORKSHOP

**10AM SAT 7 MARCH**

**JUNCTION COMMUNITY CENTRE**  
2A May Tce, Ottoway

**FREE • Morning Tea Provided**

Grow your own Native Butterfly  
and Bird attracting plants while  
getting to know the people in your  
neighbourhood. Children Welcome!

The Junction  
Community Centre      Port Adelaide-Enfield

*Together let's bring biodiversity back to our suburb!*

**MARK CHILVERS**  
Executive Director

SA Dental Service  
Roma Mitchell House  
Level 6, 136 North Terrace  
Adelaide SA 5000

☎ 08 7117 0002  
☎ 0404 066 183  
🌐 [www.sahealth.sa.gov.au/sadental](http://www.sahealth.sa.gov.au/sadental)



## Keep Children Safe Around Our Schools

To make life safer and easier for children around schools, please comply with all Australian Road Rules.

We all have a responsibility to share the road with others and when it comes to child safety, there are some simple rules we all should follow.

Safe, sensible and thoughtful parking is a sign of community respect.

*Thank you for your consideration and cooperation.*

### No Stopping

Australian Road Rule 167



- A driver must not stop on a length of road or in an area to which a no stopping sign or continuous yellow line applies.

### No Parking

Australian Road Rule 168



- A driver must not stop on a length of road or in an area to which a no parking sign applies, unless the driver -
  - is dropping off or picking up passengers, and
  - stays within 3m from the vehicle, and
  - moves on within 2 minutes

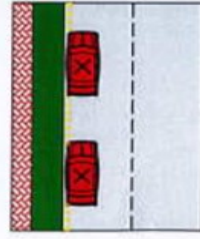
### Double Parking

Australian Road Rule 189



- A driver must not stop between a vehicle that is parked on the road and the centre of the road

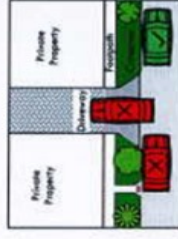
### Broken Yellow Lines



- Broken yellow lines highlights special purpose zone, a driver should refer to signposts for parking rules

### Driveways

Australian Road Rule 198 (2)



- A driver must not stop on a road in a position that obstructs access by vehicles from a driveway or pedestrians from a footpath ramp

### Wrong Way

Australian Road Rule 208 (2)



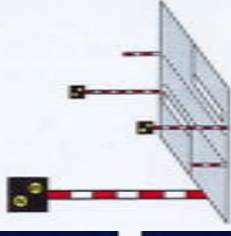
- A driver must park their vehicle in the same direction as traffic is travelling

### Pedestrian Crossings

Australian Road Rule 89 (3)

- A driver approaching a pedestrian crossing must drive at a speed at which he or she can stop, if necessary, before the crossing
- A driver must give way to any pedestrian on a pedestrian crossing
- A driver must not proceed until there is no pedestrian on or entering the crossing
- A driver must not overtake a vehicle that is travelling in the same direction who has stopped to give way to a pedestrian at the crossing
- A driver must not stop or park in the No Stopping zones on either side of the crossing as this blocks visibility

### Koala Crossings



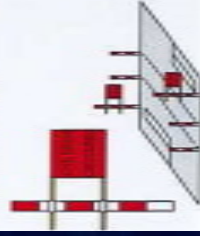
- Speed limit of 25km/hr applies when the lights are flashing
- Pedestrian crossing rules apply when the 25 lights are flashing

### Wombat Crossings



- A driver must give way to any pedestrian on or entering the crossing at all times
- Pedestrian crossing rules apply at all times

### Emu Crossings



- Pedestrian crossing rules apply when the 'Children Crossing' flag is present

### U-Turns

Australian Road Rule 39



- A driver must not make a U-turn across a solid white line
- U-turns should be avoided near schools particularly during peak times

### School Zones

Australian Road Rule 23



- School zones have a speed limit of 25km/hr at anytime when a child is in the zone, whether the child is on the road, footpath, median strip or on a bike.
- A child is any person less than 18 years of age and includes a student of any age wearing school uniform

### Roundabouts

Australian Road Rule 113



- A driver must not enter a roundabout unless if he or she can clear it, if the exit lane is congested do not enter the roundabout until it has cleared
- Queuing within a roundabout will block other traffic that may have been able to clear the roundabout further round